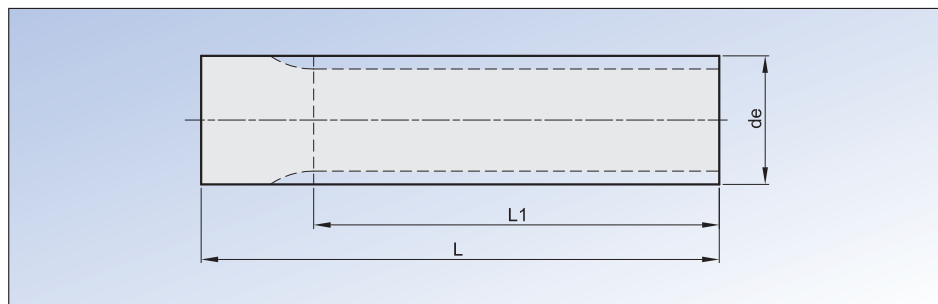


# Zahnriemenwellen T



Artikel-Nr. KF	Zähnezahl	Abmessungen in mm			Werkstoff
		de	L1	L	
T2,5-10	10	7,45	50,0	75,0	Alu
T2,5-12	12	9,00	50,0	75,0	Alu
T2,5-13	13	9,80	50,0	75,0	Alu
T2,5-14	14	10,60	50,0	75,0	Alu
T2,5-15	15	11,40	50,0	75,0	Alu
T2,5-16	16	12,20	50,0	75,0	Alu
T2,5-17	17	13,00	50,0	75,0	Alu
T2,5-18	18	13,80	50,0	75,0	Alu
T2,5-19	19	14,60	90,0	120,0	Alu
T2,5-20	20	15,40	90,0	120,0	Alu
T2,5-21	21	16,20	90,0	120,0	Alu
T2,5-22	22	17,00	125,0	140,0	Alu
T2,5-24	24	18,55	125,0	140,0	Alu
T2,5-26	26	20,15	125,0	140,0	Alu
T2,5-27	27	20,95	125,0	140,0	Alu
T2,5-28	28	21,75	125,0	140,0	Alu
T2,5-29	29	22,55	125,0	140,0	Alu
T2,5-30	30	23,35	125,0	140,0	Alu
T2,5-32	32	24,95	125,0	140,0	Alu
T2,5-34	34	26,55	125,0	140,0	Alu
T2,5-35	35	27,35	132,0	140,0	Alu
T2,5-36	36	28,10	132,0	140,0	Alu
T2,5-38	38	29,70	140,0	140,0	Alu
T2,5-40	40	31,30	140,0	140,0	Alu
T2,5-42	42	32,90	140,0	140,0	Alu
T2,5-44	44	34,50	140,0	140,0	Alu
T2,5-45	45	35,30	140,0	140,0	Alu
T2,5-48	48	37,70	140,0	140,0	Alu
T2,5-50	50	39,29	160,0	160,0	Alu
T2,5-60	60	47,25	160,0	160,0	Alu
T2,5-65	65	51,20	160,0	160,0	Alu
T2,5-70	70	55,20	160,0	160,0	Alu
T2,5-72	72	56,80	160,0	160,0	Alu
T2,5-90	90	71,12	160,0	160,0	Alu
T2,5-100	100	79,08	160,0	160,0	Alu

Artikel-Nr. KF	Zähnezahl	Abmessungen in mm			Werkstoff
		de	L1	L	
T5-10	10	15,05	125,0	140,0	Alu
T5-11	11	16,65	125,0	140,0	Alu
T5-12	12	18,25	125,0	140,0	Alu
T5-13	13	19,85	125,0	140,0	Alu
T5-14	14	21,45	140,0	140,0	Alu
T5-15	15	23,05	140,0	140,0	Alu
T5-16	16	24,60	140,0	140,0	Alu
T5-17	17	26,20	140,0	140,0	Alu
T5-18	18	27,00	140,0	140,0	Alu
T5-19	19	29,40	140,0	140,0	Alu
T5-20	20	31,00	160,0	160,0	Alu
T5-21	21	32,70	160,0	160,0	Alu
T5-22	22	34,15	160,0	160,0	Alu
T5-23	23	35,85	160,0	160,0	Alu
T5-24	24	37,40	160,0	160,0	Alu
T5-25	25	38,95	160,0	160,0	Alu
T5-26	26	40,60	160,0	160,0	Alu
T5-27	27	42,20	160,0	160,0	Alu
T5-28	28	43,75	160,0	160,0	Alu
T5-29	29	45,35	160,0	160,0	Alu
T5-30	30	46,95	160,0	160,0	Alu
T5-32	32	50,10	160,0	160,0	Alu
T5-34	34	53,25	160,0	160,0	Alu
T5-35	35	54,85	160,0	160,0	Alu
T5-36	36	56,45	160,0	160,0	Alu
T5-37	37	58,06	160,0	160,0	Alu
T5-38	38	59,65	160,0	160,0	Alu
T5-40	40	62,85	160,0	160,0	Alu
T5-42	42	66,00	160,0	160,0	Alu
T5-44	44	69,20	160,0	160,0	Alu
T5-45	45	70,80	160,0	160,0	Alu
T5-46	46	72,40	160,0	160,0	Alu
T5-48	48	75,55	160,0	160,0	Alu
T5-50	50	78,75	160,0	160,0	Alu
T5-60	60	94,65	160,0	160,0	Alu
T5-72	72	113,75	160,0	160,0	Alu
T5-80	80	126,48	160,0	160,0	Alu
T5-90	90	142,40	160,0	160,0	Alu
T5-100	100	158,31	160,0	160,0	Alu

Artikel-Nr. KF	Zähnezahl	Abmessungen in mm			Werkstoff
		de	L1	L	
T10-10	10	29,98	140,0	140,0	Alu
T10-11	11	33,16	140,0	140,0	Alu
T10-12	12	36,35	140,0	140,0	Alu
T10-13	13	39,55	140,0	140,0	Alu
T10-14	14	42,70	160,0	160,0	Alu
T10-15	15	45,90	160,0	160,0	Alu
T10-16	16	49,10	160,0	160,0	Alu
T10-17	17	52,25	160,0	160,0	Alu
T10-18	18	55,45	160,0	160,0	Alu
T10-19	19	58,65	160,0	160,0	Alu
T10-20	20	61,80	160,0	160,0	Alu
T10-21	21	65,00	160,0	160,0	Alu
T10-22	22	68,15	160,0	160,0	Alu
T10-23	23	71,35	160,0	160,0	Alu
T10-24	24	74,55	160,0	160,0	Alu
T10-26	26	80,90	160,0	160,0	Alu
T10-28	28	87,25	160,0	160,0	Alu
T10-30	30	93,65	160,0	160,0	Alu
T10-32	32	100,00	160,0	160,0	Alu
T10-34	34	106,40	160,0	160,0	Alu
T10-36	36	112,75	160,0	160,0	Alu
T10-38	38	119,10	160,0	160,0	Alu
T10-40	40	125,45	160,0	160,0	Alu
T10-45	45	141,40	160,0	160,0	Alu
T10-48	48	150,95	160,0	160,0	Alu
T10-60	60	189,15	160,0	160,0	Alu
T10-72	72	227,29	160,0	160,0	Alu