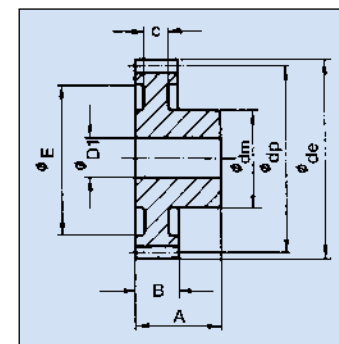


Zähnezahl	Modul 1,0						Modul 1,25					
	Artikel-Nummer Ketten Fuchs											
	SH-10- (+Zähnezahl)						SH-125- (+Zähnezahl)					
Z	Abmessungen in mm											
	de	dp	dm	D1	E	c	de	dp	dm	D1	E	c
12	14,0	12,00	9,0	4,0	-	-	17,5	15,00	9,0	5,0	-	-
13	15,0	13,00	9,0	4,0	-	-	18,75	16,25	9,0	5,0	-	-
14	16,0	14,00	9,0	4,0	-	-	20,0	17,50	9,0	5,0	-	-
15	17,0	15,00	9,0	4,0	-	-	21,25	18,75	9,0	5,0	13,5	7,0
16	18,0	16,00	9,0	4,0 (5,0)	-	-	22,5	20,00	9,0	5,0	13,5	7,0
17	19,0	17,00	9,0	4,0	-	-	23,75	21,25	9,0	5,0	13,5	7,0
18	20,0	18,00	9,0	4,0	13,5	6,0	25,0	22,50	12,0	5,0	16,0	7,0
19	21,0	19,00	9,0	4,0	13,5	6,0	26,25	23,75	12,0	5,0	16,0	7,0
20	22,0	20,00	9,0	4,0	13,5	6,0	27,5	25,00	12,0	5,0	16,0	7,0
21	23,0	21,00	12,0	5,0	16,0	6,0	28,75	26,25	15,0	6,0	19,0	7,0
22	24,0	22,00	12,0	5,0	16,0	6,0	30,0	27,50	15,0	6,0	19,0	7,0
23	25,0	23,00	12,0	5,0	16,0	6,0	31,25	28,75	15,0	6,0	19,0	7,0
24	26,0	24,00	15,0	6,0	19,0	6,0	32,5	30,00	15,0	6,0	21,5	7,0
25	27,0	25,00	15,0	6,0	19,0	6,0	33,75	31,25	15,0	6,0	21,5	7,0
26	28,0	26,00	15,0	6,0	19,0	6,0	35,0	32,50	18,0	6,0	24,0	5,5
27	29,0	27,00	15,0	6,0	19,0	6,0	36,25	33,75	18,0	6,0	24,0	5,5
28	30,0	28,00	15,0	6,0 (5,0)	22,0	6,0	37,5	35,00	18,0	8,0	24,0	5,5
30	32,0	30,00	15,0	6,0	22,0	6,0	40,0	37,50	18,0	8,0	28,0	5,5
32	34,0	32,00	18,0	6,0	24,5	4,6	42,25	40,00	18,0	8,0	28,0	5,5
33	-	-	-	-	-	-	-	-	-	-	-	-
35	37,0	35,00	18,0	8,0	24,5	4,6	46,25	43,75	18,0	8,0	28,0	5,5
36	38,0	36,00	18,0	8,0 (6,0)	28,0	4,6	46,5	45,00	18,0	8,0	37,5	5,5
38	40,0	38,00	18,0	8,0	28,0	4,6	50,0	47,50	18,0	8,0	37,5	5,5
40	42,0	40,00	18,0	8,0	28,0	4,6	52,5	50,00	18,0	8,0	37,5	5,5
42	44,0	42,00	18,0	8,0	28,0	4,6	55,0	52,50	18,0	8,0	37,5	5,5
45	47,0	45,00	18,0	8,0	37,0	4,6	58,75	56,25	21,0	8,0	47,5	5,5
48	50,0	48,00	18,0	8,0	37,0	4,6	62,5	60,00	21,0	8,0	47,5	5,5
50	52,0	50,00	18,0	8,0	37,0	4,6	65,0	62,50	21,0	8,0	47,5	5,5
52	54,0	52,00	21,0	8,0	47,0	4,6	67,5	65,00	21,0	10,0	57,0	5,5
54	56,0	54,00	21,0	8,0	47,0	4,6	70,0	67,50	21,0	10,0	57,0	5,5
55	57,0	55,00	21,0	8,0	47,0	4,6	71,25	68,75	21,0	10,0	57,0	5,5
56	58,0	56,00	21,0	8,0	47,0	4,6	72,5	70,00	21,0	10,0	57,0	5,5
58	60,0	58,00	21,0	8,0	58,0	4,6	-	-	-	-	-	-
60	62,0	60,00	21,0	8,0	47,0	4,6	77,5	75,00	21,0	10,0	67,0	5,5
64	66,0	64,00	21,0	10,0 (8,0)	57,0	4,6	82,5	80,00	21,0	10,0	67,0	5,5
65	67,0	65,00	21,0	10,0 (8,0)	57,0	4,6	83,75	81,25	21,0	10,0	67,0	5,5
70	72,0	70,00	21,0	10,0 (8,0)	57,0	4,6	90,0	87,50	21,0	10,0	77,0	5,5
72	74,0	72,00	21,0	10,0 (8,0)	67,0	4,6	92,5	90,00	21,0	12,0	77,0	5,5
75	77,0	75,00	21,0	10,0 (8,0)	67,0	4,6	96,25	93,75	21,0	10,0	77,0	5,5
80	82,0	80,00	21,0	10,0 (8,0)	67,0	4,6	102,5	100,00	24,0	12,0	87,0	5,5
85	87,0	85,00	21,0	10,0 (8,0)	77,0	4,6	-	-	-	-	-	-
90	92,0	90,00	21,0	10,0 (8,0)	77,0	4,6	115,0	112,50	24,0	12,0	97,0	5,5
96	-	-	-	-	-	-	-	-	-	-	-	-
100	102,0	100,00	24,0	12,0	87,0	4,6	127,5	125,00	24,0	12,0	107,0	5,5
110	112,0	110,00	24,0	12,0	97,0	4,6	140,0	137,50	24,0	12,0	116,0	5,5
120	122,0	120,00	24,0	12,0	107,0	4,6	-	-	-	-	-	-
130	132,0	130,00	24,0	12,0	115,0	4,6	-	-	-	-	-	-
140	142,0	140,00	24,0	12,0	125,0	4,6	-	-	-	-	-	-

## Stirnräder gerade verzahnt

aus Polyacetal

(Eingriffswinkel 20°)



**Ausführung: Gespritzt;** Bohrung spanabhebend bearbeitet

Zahnbreite B:

Modul 0,5 = 3,0 mm.  
 Modul 0,7 = 6,0 mm.  
 Modul 1,0 = 9,0 mm.  
 Modul 1,25 = 10,0 mm.  
 Modul 1,5 = 12,0 mm.  
 Modul 2,0 = 15,0 mm.  
 Modul 3,0 = 19,0 mm.

Gesamtbreite A:

Modul 0,5 =  $7,0 (z = 12 - 14)$   
 $10,0 (z = 15 - 120)$   
 Modul 0,7 = 15,0 mm.  
 Modul 1,0 =  $17,0 (z = 12 - 23)$   
 $18,0 (z = 24 - 140)$   
 Modul 1,25 = 19,0 mm.  
 Modul 1,5 = 23,0 mm.  
 Modul 2,0 = 27,0 mm.  
 Modul 3,0 = 34,0 mm.