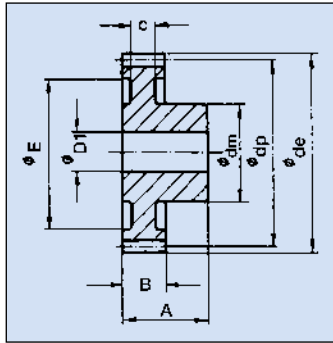


Stirnräder gerade verzahnt

aus Polyacetal

(Eingriffswinkel 20°)



Ausführung: Gespritzt; Bohrung spanabhebend bearbeitet

Zahnbreite B:

- Modul 0,5 = 3,0 mm.
- Modul 0,7 = 6,0 mm.
- Modul 1,0 = 9,0 mm.
- Modul 1,25 = 10,0 mm.
- Modul 1,5 = 12,0 mm.
- Modul 2,0 = 15,0 mm.
- Modul 3,0 = 19,0 mm.

Gesamtbreite A:

- Modul 0,5 = $\frac{7,0 (z = 12 - 14)}{10,0 (z = 15 - 120)}$
- Modul 0,7 = 15,0 mm.
- Modul 1,0 = $\frac{17,0 (z = 12 - 23)}{18,0 (z = 24 - 140)}$
- Modul 1,25 = 19,0 mm.
- Modul 1,5 = 23,0 mm.
- Modul 2,0 = 27,0 mm.
- Modul 3,0 = 34,0 mm.

Zähne- zahl	Modul 0,5						Modul 0,7					
	Artikel-Nummer Ketten Fuchs											
	SH-05- (+Zähnezahl)						SH-07- (+Zähnezahl)					
	Abmessungen in mm											
Z	de	dp	dm	D1	E	c	de	dp	dm	D1	E	c
12	7,0	6,00	4,0	2,0	-	-	9,8	8,40	6,0	3,0	-	-
13	7,5	6,50	4,0	2,0	-	-	10,5	9,10	6,0	3,0	-	-
14	8,0	7,00	5,0	2,0	-	-	11,2	9,80	6,0	3,0	-	-
15	8,5	7,50	6,0	3,0	-	-	11,9	10,50	6,0	3,0	-	-
16	9,0	8,00	6,0	3,0	-	-	12,6	11,20	9,0	4,0	-	-
17	9,5	8,50	6,0	3,0	-	-	13,3	11,90	9,0	4,0	-	-
18	10,0	9,00	8,0	4,0	-	-	14,0	12,60	9,0	4,0	-	-
19	10,5	9,50	8,0	4,0	-	-	14,7	13,30	9,0	4,0	-	-
20	11,0	10,00	8,0	4,0	-	-	15,4	14,00	9,0	4,0	-	-
21	11,5	10,50	8,0	4,0	-	-	16,1	14,70	9,0	4,0	-	-
22	12,0	11,00	10,0	4,0	-	-	16,8	15,40	9,0	4,0	-	-
23	12,5	11,50	10,0	4,0	-	-	17,5	16,10	9,0	4,0	-	-
24	13,0	12,00	10,0	4,0	-	-	18,2	16,80	9,0	4,0	13,5	3,0
25	13,5	12,50	10,0	4,0	-	-	18,9	17,50	9,0	6,0	13,5	3,0
26	14,0	13,00	10,0	4,0	-	-	19,6	18,20	9,0	6,0	13,5	3,0
27	14,5	13,50	10,0	4,0	-	-	20,3	18,90	9,0	6,0	13,5	3,0
28	15,0	14,00	10,0	4,0	-	-	21,0	19,60	9,0	6,0	13,5	3,0
30	16,0	15,00	12,0	4,0	-	-	22,4	21,00	12,0	6,0	16,0	3,0
32	17,0	16,00	12,0	4,0 (5,0)	-	-	23,8	22,40	12,0	6,0	16,0	3,0
33	-	-	-	-	-	-	-	-	-	-	-	-
35	18,5	17,50	12,0	4,0	-	-	25,9	24,50	15,0	6,0	19,0	3,0
36	19,0	18,00	12,0	4,0 (5,0)	-	-	26,6	25,20	15,0	6,0	19,0	3,0
38	20,0	19,00	12,0	4,0	-	-	28,0	26,60	15,0	6,0	21,5	3,0
40	21,0	20,00	12,0	4,0	14,5	2,0	29,4	28,00	15,0	6,0	21,5	3,0
42	22,0	21,00	12,0	4,0	16,0	2,0	30,8	29,40	18,0	6,0	24,5	2,0
45	23,5	22,50	12,0	4,0	18,5	2,0	32,9	31,50	18,0	6,0	24,5	2,0
48	25,0	24,00	15,0	6,0	19,0	2,0	35,0	33,60	18,0	8,0	24,5	2,0
50	26,0	25,00	15,0	6,0	20,0	2,0	36,4	35,00	18,0	8,0	28,0	2,0
52	27,0	26,00	15,0	6,0	21,0	2,0	37,8	36,40	18,0	8,0	28,0	2,0
54	28,0	27,00	15,0	6,0	22,0	2,0	39,2	37,80	18,0	8,0	28,0	2,0
55	28,5	27,50	15,0	6,0	23,0	2,0	39,9	38,50	18,0	8,0	31,0	2,0
56	29,0	28,00	15,0	6,0	23,0	2,0	40,6	39,20	18,0	8,0	31,0	2,0
58	-	-	-	-	-	-	-	-	-	-	-	-
60	31,0	30,00	15,0	6,0	24,0	2,0	43,4	42,00	18,0	8,0	31,0	2,0
64	33,0	32,00	15,0	6,0	25,0	2,0	46,2	44,80	18,0	8,0	37,5	2,0
65	33,5	32,50	15,0	6,0	27,0	2,0	46,9	45,50	18,0	8,0	37,5	2,0
70	36,0	35,00	15,0	6,0	29,0	2,0	50,4	49,00	18,0	8,0	37,5	2,0
72	37,0	36,00	15,0	6,0	30,0	2,0	51,8	50,40	18,0	8,0	37,5	2,0
75	38,5	37,50	15,0	6,0	33,0	2,0	53,9	52,50	18,0	10,0	37,5	2,0
80	41,0	40,00	15,0	6,0	36,0	2,0	57,4	56,00	21,0	10,0	47,0	2,0
85	-	-	-	-	-	-	-	-	-	-	-	-
90	46,0	45,00	15,0	6,0	39,0	2,0	64,4	63,00	21,0	10,0	56,5	2,0
96	49,0	48,00	15,0	6,0	42,0	2,0	68,6	67,20	21,0	10,0	56,5	2,0
100	51,0	50,00	15,0	6,0	44,0	2,0	71,4	70,00	21,0	10,0	56,5	2,0
110	-	-	-	-	-	-	-	-	-	-	-	-
120	61,0	60,00	15,0	6,0	54,0	2,0	85,4	84,00	21,0	10,0	77,0	2,0
130	-	-	-	-	-	-	-	-	-	-	-	-
140	-	-	-	-	-	-	-	-	-	-	-	-